



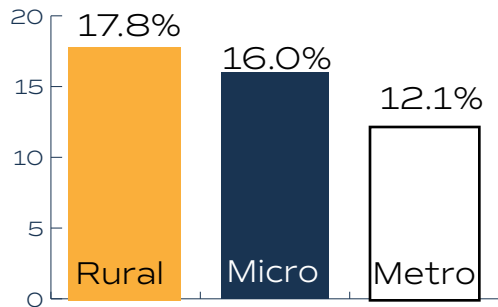
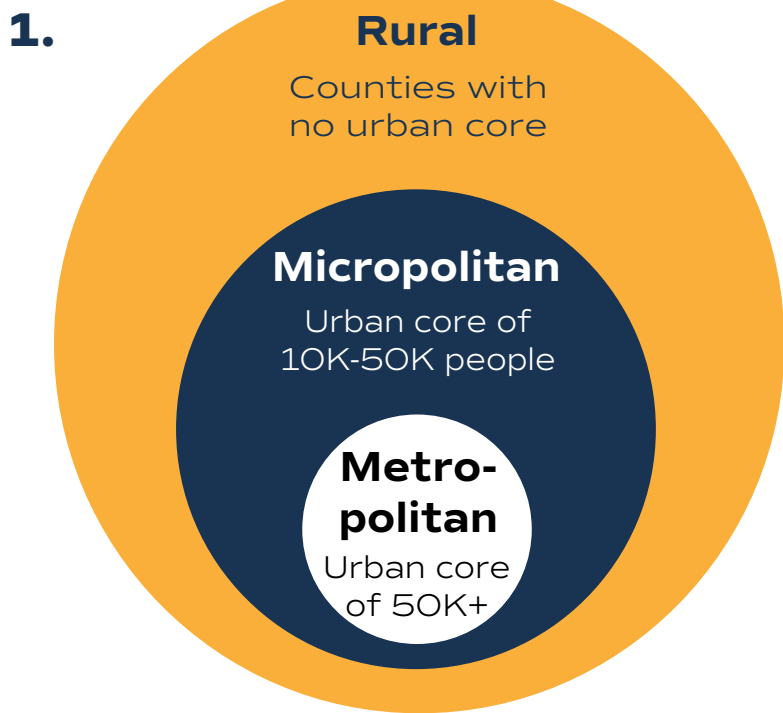
For references, visit: idrpp.usu.edu/projects/muldinet-utah

Utah's Disability Diversity: Rural Communities

Utah's Multicultural Disability Network

What makes a community **rural**?

(Rural & Training Center on Disability in Rural Communities, 2023)

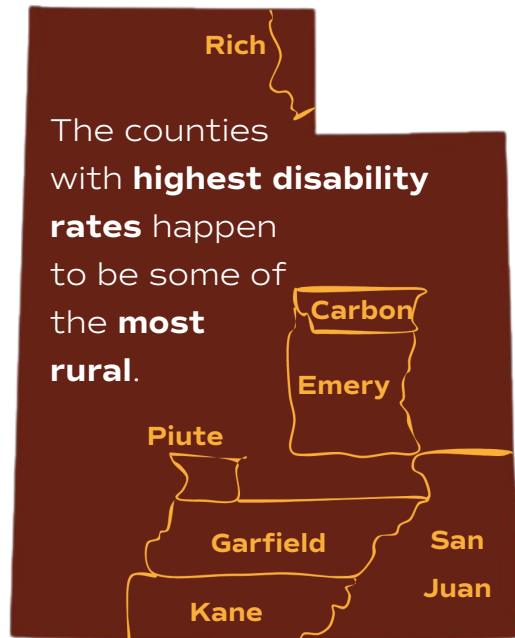


How many people report they have disabilities?

2. Rural counties are made up of **small settlements** with **open country** and populations of **less than 2,500**

(Clark, Harper, & Weber, 2022)

3.1 million people with disabilities live in rural areas nationwide



(Rural Institute, 2020)

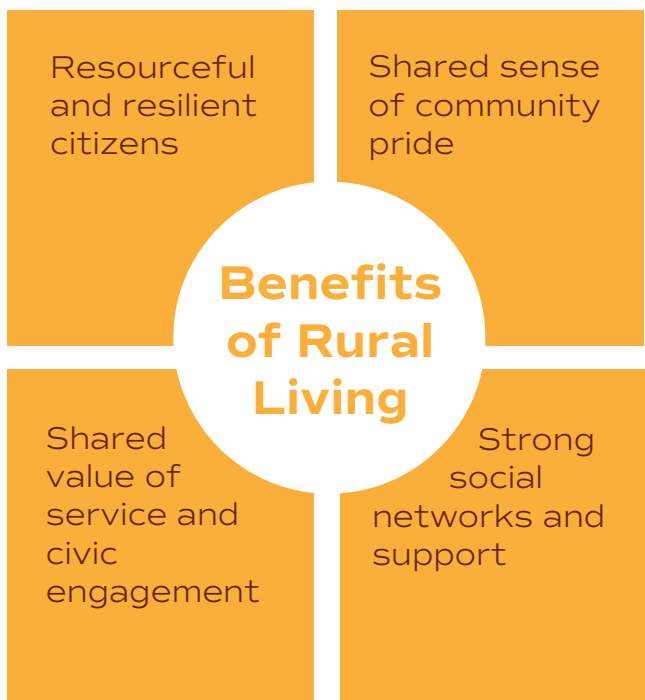
Healthcare systems are **not designed for rural** areas.

- Lack of healthcare providers in rural areas
- Lack of services for intellectual and developmental disabilities
- Increased travel time to access services
- Longer response times by emergency medical teams
- Increased reliance on social support network to access services
- Healthcare providers often do not understand rural life constraints

(Sage, Mashinchi, & Ravesloot, 2023)

People living in rural areas report having **disabilities 10 years earlier in life** than urban-dwelling individuals.

(Sage, Ward, Myers, & Ravesloot, 2019)



(Fleming et. al, 2018)

People with disabilities living in rural areas are:

- More likely to have public healthcare coverage (compared to 73% in urban areas)
- Less likely to have private healthcare coverage (compared to 50% in urban areas)
- Less likely to be employed (compared to 39% in urban areas)
- More likely to be living in poverty (compared to 20% in urban areas)

(Rural & Training Center on Disability in Rural Communities, 2023)

